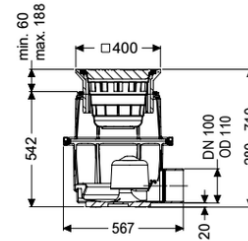


Yard drain System 400, DN 150, B, 580-710 mm



Article information

Item no.: 851151B
 GTIN: 4026092004388
 Price group: 10

Advantages

- Different load classes available
- Height-adjustable complete system
- Easy underground installation

Description

The polymer yard drain is used for point drainage and is resistant to aggressive wastewater. It is equipped with a sludge bucket and fuel resistant seals. The polymer upper section enables continuous height and level adjustment.

| | |
|--|-------------------|
| Variant | |
| System: | 400 |
| Heating: | without |
| Contents of sludge trap: | yes |
| Waterproofing layer on the upper section: | Connection flange |
| Discharge rate (l/s) with 20 mm backwater: | 4,5 |

| | |
|-------------------------|--------|
| General characteristics | |
| Colour: | black |
| Standard: | EN 752 |
| Nominal size (DN): | 150 |
| Outer diameter (OD): | 160 mm |

| | |
|--|-------------|
| Dimensions | |
| Vertical adjustment: | 55 - 180 mm |
| Net weight: | 23 kg |
| Gross weight: | 23 kg |
| Groundwater resistant from lower edge of base section: | 500 mm |
| Cutout dimension, width: | 535 mm |
| Cutout dimension, length: | 585 mm |

| | |
|------------------------|-------------------------------------|
| Min. insertion depth: | 55 mm |
| Vertical installation: | 55 - 185 |
| Installation depth: | 580 - 710 mm |
| Vertical adjustment: | vertically adjustable upper section |
| Length: | 563 mm |
| Width: | 500 mm |
| Height: | 580 mm |
| Packaging dimension: | length |
| Packaging dimension: | width |
| Packaging dimension: | height |

| | |
|-------------------------|---------|
| Tank/drain body | |
| Number of outlets: | 1 |
| Material of drain body: | Polymer |
| System: | lateral |

| | |
|--------------------------|---------------------|
| Coverage features | |
| Type of cover: | Round slotted cover |
| Cover material: | Grey iron |
| Width of cover: | 400 mm |
| Length of cover: | 400 mm |
| Load class: | B 125 (EN 124) |
| Rim length: | 400 mm |
| Rim material: | 400 mm |
| Shape of upper section: | square |
| Contents of sludge trap: | yes |
| Odour trap: | included |